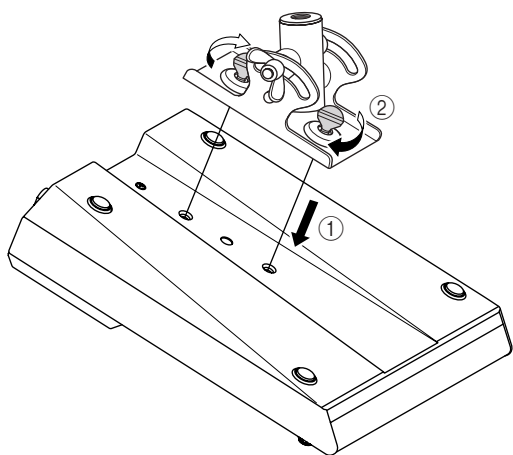


Mounting to a Microphone Stand



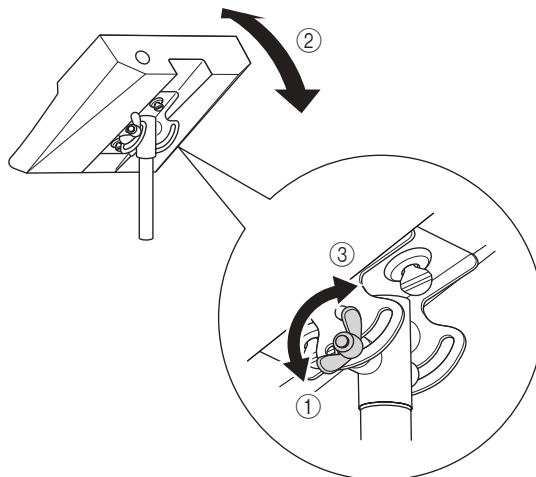
- When using the mixer on a microphone stand, be sure to set the stand on a level and stable surface. Do not set up the stand in locations subject to vibrations or wind.
- Note that mixer may be damaged if the stand should fall over. Attach the connection cables carefully so that the cables will not catch on the equipment and cause it to fall. For example: arrange the cables so that they run parallel with the microphone pole down to the base of the stand.
- Leave ample free space around the stand.

- 1** Turn the mixer upside-down, and hold the microphone-stand adaptor (BMS-10A; sold separately) against the bottom of the mixer so that the screw holes are aligned (①).
Screw the adaptor firmly into place with the two screws (②).



- 2** Turn the mixer right-side up, and mount it onto your microphone stand.

- 3** Loosen the angle adjustment wingnut (①), adjust the mixer's angle as desired (②), and then tighten the wingnut securely (③).



For more information, refer to the BMS-10A Owner's Manual.



YAMAHA

BMS-10A

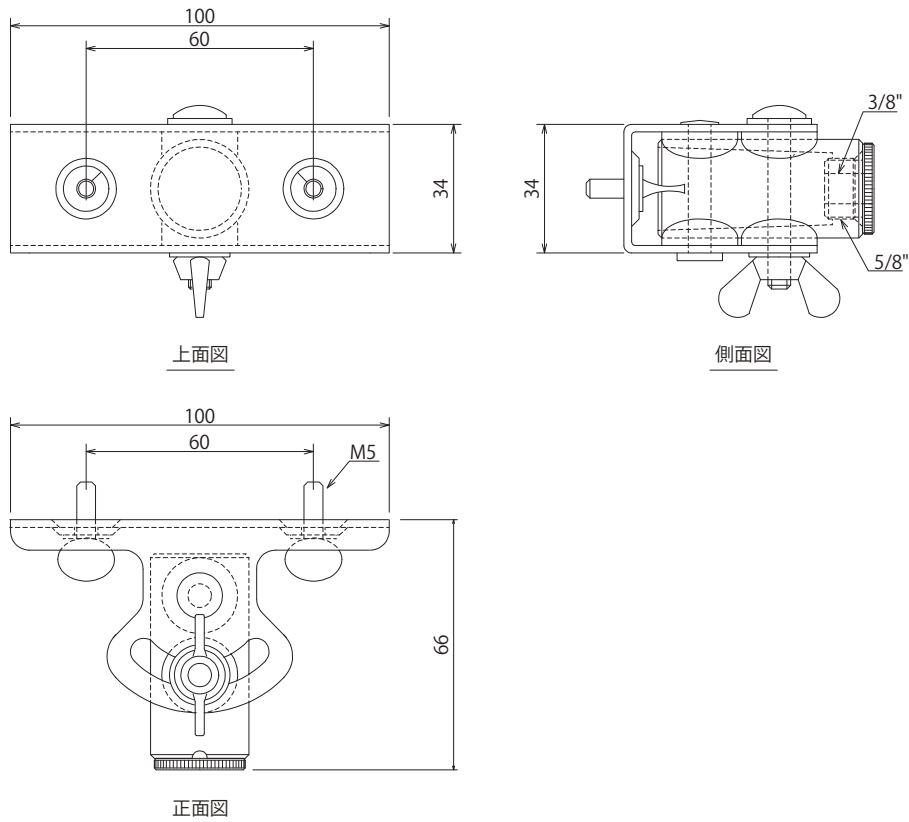
マイクスタンドアダプター

小型ミキサー、小型スピーカーをマイクスタンドに取り付けるアダプター。

●仕様

耐荷重	5kg
マイクスタンド取付ネジ規格	5/8 インチ (SHURE 規格)
付属品	ネジ変換アダプター 3/8" (AKG 規格) → 5/8" (SHURE 規格)
質量	240g
仕上げ	半艶黒塗装

●外観図



SCALE: 1/2

(単位:mm)

二版 2016年2月改訂

Page 1 of 1