

Quick Start Guide



CMS 1201SW

12" Ceiling Subwoofer for Installation Applications

EN Important Safety Instructions



Terminals marked with this symbol carry electrical current of sufficient magnitude to constitute risk of electric shock.

Use only high-quality professional speaker cables with ¼" TS or twist-locking plugs pre-installed. All other installation or modification should be performed only by qualified personnel.



This symbol, wherever it appears, alerts you to the presence of uninsulated dangerous voltage inside the enclosure - voltage that may be sufficient to constitute a risk of shock.



This symbol, wherever it appears, alerts you to important operating and maintenance instructions in the accompanying literature. Please read the manual.



Caution

To reduce the risk of electric shock, do not remove the top cover (or the rear section). No user serviceable parts inside. Refer servicing to qualified personnel.



Caution

To reduce the risk of fire or electric shock, do not expose this appliance to rain and moisture. The apparatus shall not be exposed to dripping or splashing liquids and no objects filled with liquids, such as vases, shall be placed on the apparatus.



Caution

These service instructions are for use by qualified service personnel only. To reduce the risk of electric shock do not perform any servicing other than that contained in the operation instructions. Repairs have to be performed by qualified service personnel.

1. Read these instructions.
2. Keep these instructions.
3. Heed all warnings.
4. Follow all instructions.
5. Do not use this apparatus near water.
6. Clean only with dry cloth.
7. Do not block any ventilation openings. Install in accordance with the manufacturer's instructions.
8. Do not install near any heat sources such as radiators, heat registers, stoves, or other apparatus (including amplifiers) that produce heat.

9. Do not defeat the safety purpose of the polarized or grounding-type plug. A polarized plug has two blades with one wider than the other. A grounding-type plug has two blades and a third grounding prong. The wide blade or the third prong are provided for your safety. If the provided plug does not fit into your outlet, consult an electrician for replacement of the obsolete outlet.

10. Protect the power cord from being walked on or pinched particularly at plugs, convenience receptacles, and the point where they exit from the apparatus.

11. Use only attachments/accessories specified by the manufacturer.



12. Use only with the cart, stand, tripod, bracket, or table specified by the manufacturer, or sold with the apparatus. When a cart is used, use caution when moving the cart/apparatus combination to avoid

injury from tip-over.

13. Unplug this apparatus during lightning storms or when unused for long periods of time.

14. Refer all servicing to qualified service personnel. Servicing is required when the apparatus has been damaged in any way, such as power supply cord or plug is damaged, liquid has been spilled or objects have fallen into the apparatus, the apparatus has been exposed to rain or moisture, does not operate normally, or has been dropped.

15. The apparatus shall be connected to a MAINS socket outlet with a protective earthing connection.

16. Where the MAINS plug or an appliance coupler is used as the disconnect device, the disconnect device shall remain readily operable.



17. Correct disposal of this product: This symbol indicates that this product must not be disposed of with household waste, according to the WEEE Directive (2012/19/EU) and your national law. This product should be taken to a collection center licensed for the recycling of waste electrical and electronic equipment (EEE). The mishandling of this type of waste could have a possible negative impact on the environment and human health due to potentially hazardous substances that are generally associated with EEE. At the same time, your cooperation in the correct disposal of this product will contribute to the efficient use of natural resources. For more information about where you can take your waste equipment for recycling, please contact your local city office, or your household waste collection service.

18. Do not install in a confined space, such as a book case or similar unit.

19. Do not place naked flame sources, such as lighted candles, on the apparatus.

20. Please keep the environmental aspects of battery disposal in mind. Batteries must be disposed of at a battery collection point.

21. This apparatus may be used in tropical and moderate climates up to 45°C.

LEGAL DISCLAIMER

Music Tribe accepts no liability for any loss which may be suffered by any person who relies either wholly or in part upon any description, photograph, or statement contained herein. Technical specifications, appearances and other information are subject to change without notice. All trademarks are the property of their respective owners. Midas, Klark Teknik, Lab Gruppen, Lake, Tannoy, Turbosound, TC Electronic, TC Helicon, Behringer, Bugera, Oberheim, Auratone, Aston Microphones and Coolaudio are trademarks or registered trademarks of Music Tribe Global Brands Ltd. © Music Tribe Global Brands Ltd. 2021 All rights reserved.

LIMITED WARRANTY

For the applicable warranty terms and conditions and additional information regarding Music Tribe's Limited Warranty, please see complete details online at musictribe.com/warranty.

Introduction

Thank you for purchasing this Tannoy product. The CMS 1201SW is a powerful large format in-ceiling subwoofer loudspeaker device conceived, designed and built to complement Tannoy's existing class-leading CMS range, or any full range system requiring extended bass response. Intended for systems utilizing an external active crossover and separate amplifier channel for the subwoofers, the CMS 1201SW features a high power handling 12" (300 mm) bass driver featuring a 3" copper sandwich voice coil for low power compression and triple aluminium demodulating rings for ultra-low distortion.

The custom-engineered powder coated steel back-can has been designed to cater for all conceivable installation possibilities, making the CMS 1201SW extremely versatile. The internally-dampened 79 litre (2.8 cubic feet) back-can provides exceptional LF performance on a par with conventional wooden enclosure loudspeakers. Steel mounting lugs allow for fitting to a Unistrut roof rail system or for suspension via 4 top-mounted eye bolts. Alternatively, the design caters for a single point hang via M10 or 3/8 UNC screwed rod. Connection is simple via terminal barrier strips inside the can, easily accessible via 20 mm and 29 mm conduit knockouts on all 5 sides of the can.

Unpacking and Visual Checks

Every Tannoy product and accessory is carefully inspected before packing. After unpacking, please inspect your product to make sure no damage has occurred in transit. In the unlikely event of any damage, would you please notify your dealer immediately and retain your shipping carton, as your dealer may ask you to return the faulty unit to him for inspection.

Product Overview

The CMS 1201SW comprises three discrete components that are ordered separately under different part numbers.

- A loudspeaker assembly that includes a drive unit mounted on a ported steel baffle
- A steel back-can with multiple mounting points
- A grille assembly with its moulded bevel cover

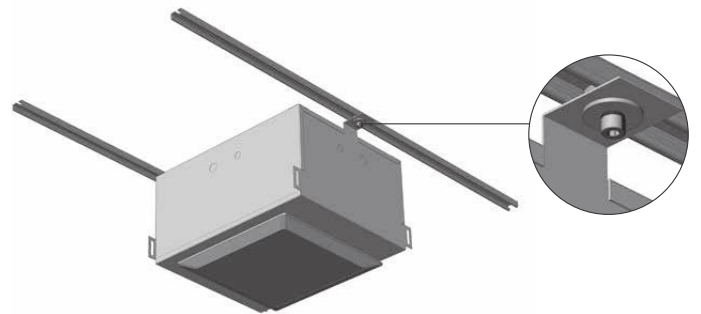
Installation Guide

Back-can

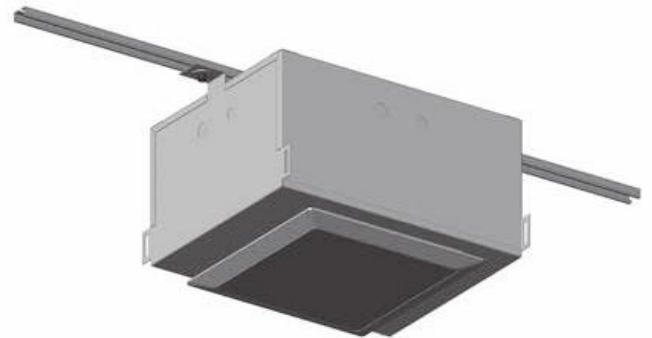
The custom engineered powder coated steel back-can has been designed to cater for all conceivable installation possibilities making the CMS 1201SW extremely versatile. Internally dampened with particle board, the addition of the back-can provides exceptional low frequency performance.

Mounted using Unistrut roof rail system

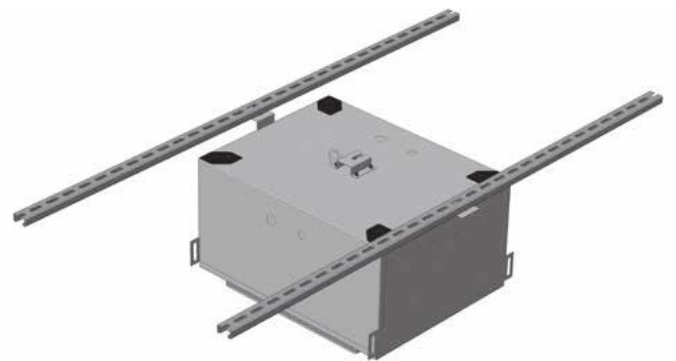
Steel mounting lugs allow for fitting to a Unistrut roof rail system in a variety of configurations both directly or via secondary prefixed cross struts.



Screw at fixing point should use a large series washer to help spread the load.



Speaker mounted to a single rail



Back-can mounted between rails

Flying using Eyebolts

WARNING: The operation of your product as part of a flown system, if installed incorrectly and improperly, can potentially expose persons to serious health risks and even death. In addition, please ensure that electrical, mechanical and acoustic considerations are discussed with qualified and certified (by local, state or national authorities) personnel prior to any installation or flying.

Make sure that the product is set up and "flown" by qualified and certified personnel only, using dedicated equipment and original parts and components delivered with the unit. If any parts or components are missing please contact your dealer before attempting to set up the system.

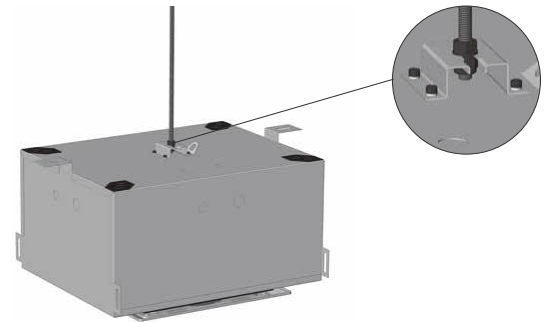
Be sure to observe the local, state and other safety regulations applicable in your country. Music Group assumes no liability for any damage or personal injury resulting from improper use, installation or operation of the product. Regular checks must be conducted by qualified personnel to ensure that the system remains in a secure and stable condition. Make sure that, where the product is flown, the area underneath the product is free of human traffic. Do not fly the product in areas which can be entered or used by members of the public.



Flying Using Screwed Rod

The design also caters for a single point central hang via M10 or 3/8 UNC screwed rod – made easy thanks to the slotted mounting saddle on the top of the back-can. If required a safety wire can be attached to any of the M10 flying points.

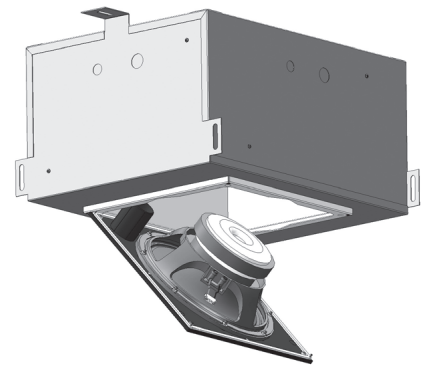
To fit the back can to threaded rod support, first run a nut 50 mm (2") up the rod followed by two plain washers and then a locking nut (Nyloc). Hook the back can on to the rod between the two plain washers. Once the nut has cleared the guide slot the top nut can be locked down to secure.



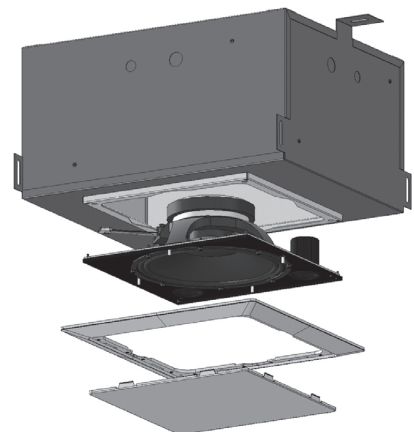
Fitting the loudspeaker assembly

Mounting of the loudspeaker assembly to the pre-installed back-can is a one man job thanks to the common sense design approach. One edge of the baffle clips onto the steel box to hold it in place while the installer secures the assembly in place. Connection is simple via terminal barrier strips inside the can, easily accessible via 20 mm (0.79") and 29 mm (1.14") conduit knockouts on all five sides of the can. Saving time and manpower during installation has been a driving factor behind the design of the CMS 1201SW system.

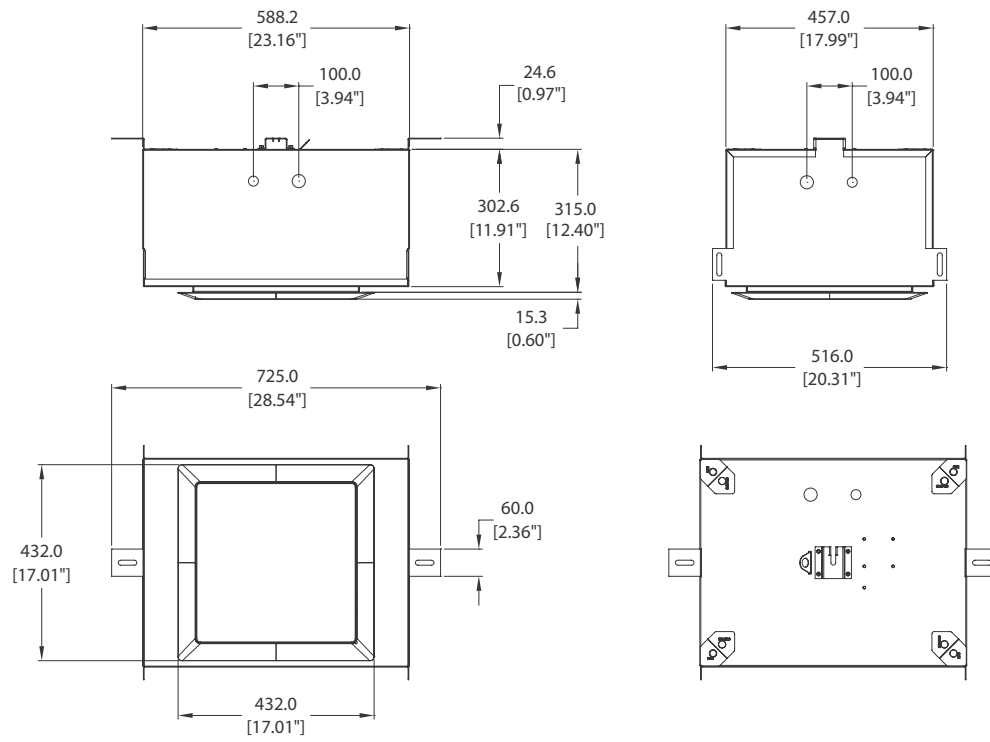
Baffle assembly can be hooked onto the back can with care.



Fitting the grille



Dimensions



Specifications

Performance

Frequency response (-3 dB) ⁽¹⁾	34 Hz - 1 kHz
Frequency range (-10 dB)	30 Hz - 3 kHz
System Sensitivity (1W @1m) ⁽²⁾	93 dB (1 W = 2.83 V for 8 Ohms)
Rated maximum SPL	
Average	120 dB
Peak	126 dB
Power Handling	
Average	400 W
Programme	800 W
Peak	1600 W
Recommended Amplifier Power	800 W @ 8 Ohms
Nominal Impedance	8 Ohms
Transducer	1 x 300 mm (12") Bass Driver with 3" Voice Coil

Physical

Enclosure	
Backcan	1.6 mm black powder coated steel, damped with particle board
Baffle	1.2 mm black powder coated steel
Grille	1.0 mm white powder coated perforated steel
Dimensions	331 x 725 x 516 mm (13.0 x 28.5 x 20.3")
Net Weight	
Backcan	21.8 kg (48.0 lbs)
Baffle	6.9 kg (15.2 lbs)
Grille	1.0 kg (2.2 lbs)

Notes:

1. Average over stated bandwidth. Measured in an IEC baffle in an Anechoic Chamber

2. Unweighted pink noise input, measured at 1 metre on axis

3. PEQ1: 50Hz +2.6dB 1Q

PEQ2: 175Hz -4.6dB 1Q

A full range of measurements, performance data, CLF and Ease™ Data for CMS 1201SW can be downloaded from www.tannoypro.com.

- 1. Register online.** Please register your new Music Tribe equipment right after you purchase it by visiting musictribe.com. Registering your purchase using our simple online form helps us to process your repair claims more quickly and efficiently. Also, read the terms and conditions of our warranty, if applicable.
- 2. Malfunction.** Should your Music Tribe Authorized Reseller not be located in your vicinity, you may contact the Music Tribe Authorized Fulfiller for your country listed under “Support” at musictribe.com. Should your country not be listed, please check if your problem can be dealt with by our “Online Support” which may also be found under “Support” at musictribe.com. Alternatively, please submit an online warranty claim at musictribe.com BEFORE returning the product.
- 3. Power Connections.** Before plugging the unit into a power socket, please make sure you are using the correct mains voltage for your particular model. Faulty fuses must be replaced with fuses of the same type and rating without exception.



Hereby, Music Tribe declares that this product is in compliance with Directive 2011/65/EU and Amendment 2015/863/EU, Directive 2012/19/EU, Regulation 519/2012 REACH SVHC and Directive 1907/2006/EC, and this passive product is not applicable to EMC Directive 2014/30/EU, LV Directive 2014/35/EU.

Full text of EU DoC is available at <https://community.musictribe.com/>

EU Representative: Music Tribe Brands DK A/S

Address: Ib Spang Olsens Gade 17, DK - 8200 Aarhus N, Denmark

