

26740 Monitor Stand

- slim and practical stand for positioning monitors
- max. load: 35 kg central load capacity
- monitor can also be attached directly with a 3/8" thread connection
- support plate (245 x 205 mm) can be fitted either with 4 rubber studs or 4 threaded nibs to hold the monitor in place
- height can be adjusted from 950 to 1430 mm, footprint 450 mm, own weight 9.9 kg

Thank you for choosing this product. This instruction manual informs you about the important steps to set up and handle the product. We recommend to keep the manual in a separate place for a possible later use.

SAFETY NOTES

- Take care when handling the base plate **1**, do not allow to fall when assembling.
- Ensure all screw connections are tight.
- Safety catch **9** must always be in place.
- Always remove the monitor before adjusting the height of the stand or moving to another place.
- When the monitor has been removed, there is a risk of injury from the exposed brass nibs **7**. When not using the stand, either dismantle it or take suitable protective measures.
- Stand is only suitable for even and firm ground.
- Ensure there is sufficient clearance at public conventions.

ASSEMBLY INSTRUCTIONS

- Place the base plate **1** on the ground with the felt protectors on the underside.
- Attach the base shaft **2** to the base plate using thread M20.

TO ADJUST THE HEIGHT

- Lift the extension shaft **10** slightly
- Insert safety catch **9**, with the tappet facing upwards, through a slit in the extension shaft **10** at the required height until it reaches the stop position. Lower the extension shaft until the safety catch is visible on both sides of the clamping collar **4**.
- Insert the clamping screw **3** through the loop in the cord **8** and screw to the clamping collar **4**.
- Connect the support plate **11** to the thread of the extension shaft **10**.

UNDERLAY FOR MONITOR

- Either 4 brass nibs **7** or 4 rubber studs **12**.
Brass nibs: insert thread from above through the drill hole (8 holes to choose from) and connect tightly to the base plate using a washer **6** and locking nut **5**.
Rubber studs: self-adhesive; remove protective foil and attach at required place.

INSPECTION, MAINTENANCE, CLEANING

- For maintenance purposes, remove the monitor and be aware of potential hazards (brass nibs, pinching, knocking, tipping) and take suitable precautions.
- For cleaning purposes utilise a slightly damp cloth with a non-abrasive cleaning solvent

FAULT-FINDING (F) and REPAIR (R)

- F: Stand or extension shaft wobbles R: Ensure ground is even
R: Re-tighten connections
R: Check safety catch

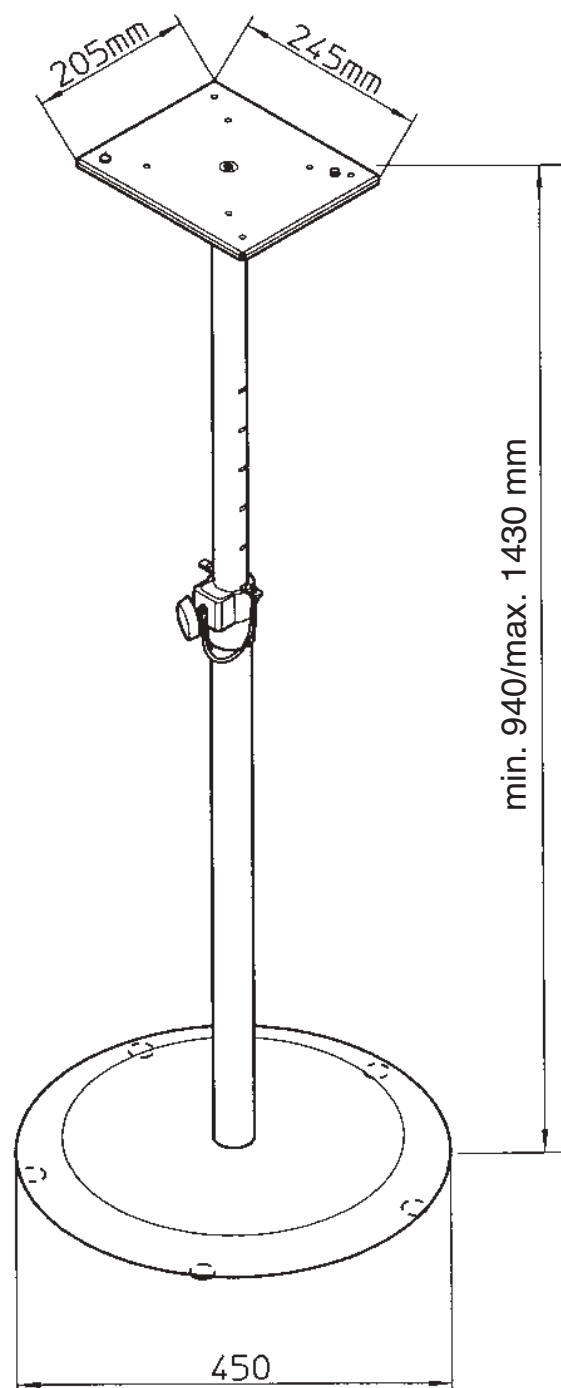
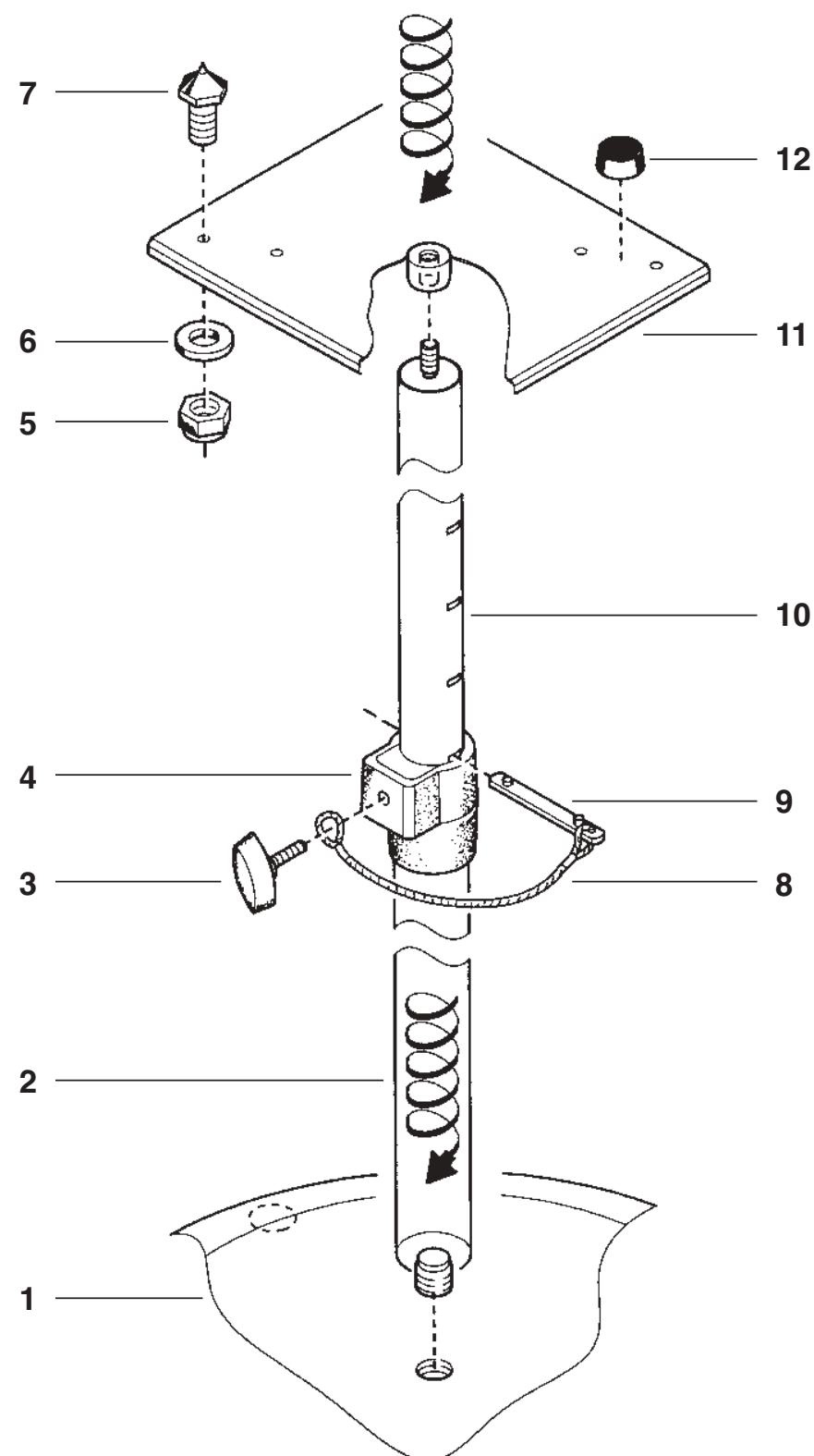
TECHNICAL DATA / SPECIFICATIONS

Materials	base plate: cast iron, shafts, support plate: steel, clamp collar: PA
Traglast	max. 35 kg central load
Dimensions	base plate ø 450mm, height: 950-1430 mm, extension shaft ø 35 mm
Accessories (optional)	carry bags: K&M 21421 (shaft), K&M 26751 (base plate)



KÖNIG & MEYER

Stands For Music



KÖNIG & MEYER GmbH & Co. KG
 Kiesweg 2, 97877 Wertheim, www.k-m.de
 26740-000-55 Rev.07 03-80-827-00 3/13