

214/6 Speaker Stand

- load capacity: 50 kg*
- professional, solid, transportable
- similarly adapted for home, property, public area
- Height: min. 1395 mm / max. 2170 mm; foot circle: 1320 mm; extension ø 35 mm; weight: 4,4 kg

Thank you for choosing this product. This instruction manual informs you about the important steps to set up and handle the product. We recommend to keep the manual in a place for a possible later use.

SAFETY INSTRUCTIONS

- Load capacity: max. 50 kg*
- Before and after use check stand for damage. Damaged Stands may not be used.
- before use:
 - check the functional capability of: K&M-stand, speakers and tools concerning: completeness, integrity, usability
 - choose only trained installers (2 persons with professional and physical qualification)
- optimal stability conditions:
 - use only on even and stable surface
 - avoid off-center loading
 - set up brace 4 in horizontal position
- safety in operation:
 - unauthorized persons should keep distance to protect from stumble and tilting
 - inspect bolted assemblies regularly
 - always insert the safety pin after positioning of the speaker
 - do not push and pull the loaded stand on the floor; it can cause damages on the base
- safety in maintaining and removing
 - first remove load
 - pay attention to possible hazards (squeezing, hurting) by collapsing

MOUNTING INSTRUCTIONS

The mounting of the 214/6 is easy to handle

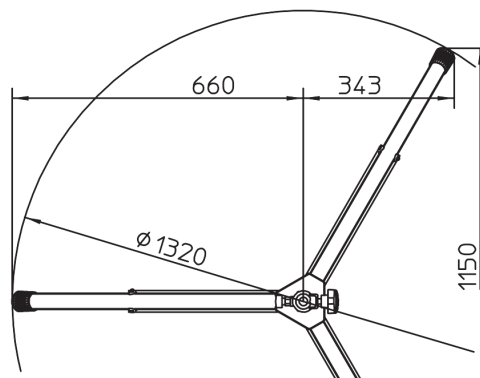
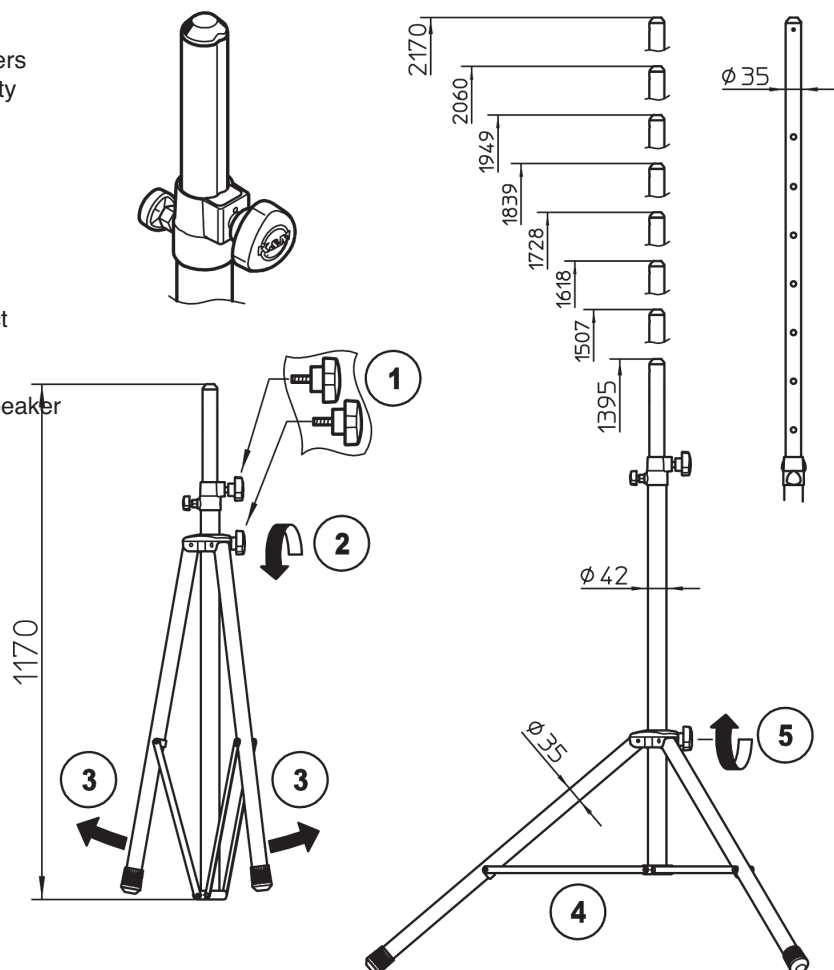
- 1 screw-in both locking knobs
- 2 loosen the locking knob on the base clamp
- 3 spread legs apart to max. base width
- 4 braces should come into a horizontal position
- 5 tighten locking knob 2

NOTE:

Do not over tighten the locking knobs.
This will result in undue stress to the fitting.
Just enough to hold the extensions position firmly.

SPECIFICATIONS

Material	baserods: Alu extension, braces, locking pin: steel clamps: zinc die-cast foot rubbers: (TPE)
Load capacity	max. 50 kg*
Dimensions	foot circle: diameter 1320 mm height: 1395 - 2170 mm (by max.foot circle) extension: diameter 35 mm
Collapsed, kg	1170 x 145 x 126 mm, 4,4 kg
Card box, kg	1185 x 130 x 120 mm, 5,2 kg
Accessories (optional)	bag 21311 (for one or two 21460) K&M-flange adaptor (e.g. 19580, 19656) K&M-screw-on-adaptor 24281 K&M-sleeve adaptor 21326 (ø 38 mm)



* With centric loading, on a horizontal surface and without lateral forces (wind, shocks etc.)

USER INFORMATION/FUNCTIONS

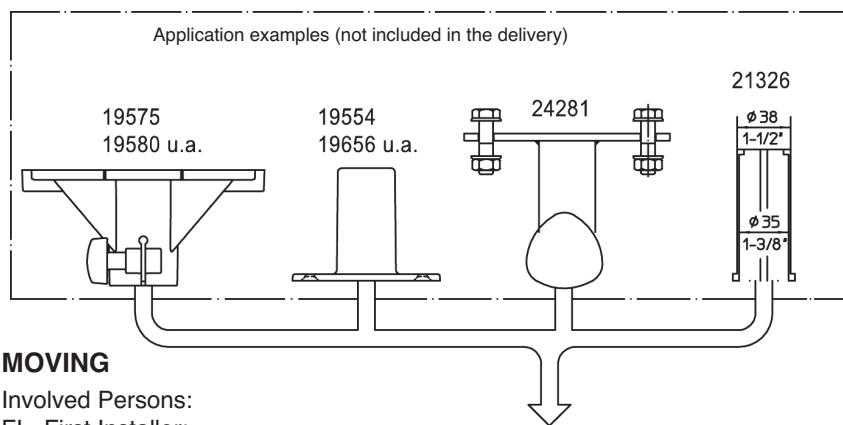
WHEN MOUNTING SPEAKERS and STRADDLING STAND

- NOTE!

Do not undervalue the weight of the load.

- Attaching and moving of the load should be done by trained installers
- While moving the load hold the extension in a safe and firm way.
- Secure the extension with the locking pin.
- NEW: the extension ends in a cone.

This would be helpful to attach the load.



MOVING

Involved Persons:

FI - First Installer:

holds the loaded extension

SI - Second Installer:

handles locking knob and locking pin

Action:

FI

1 holds the extension firmly

SI

2 loosens the locking knob

3 pulls the head of the locking pin until the extension is able to move

FI

4 lifts the extension in desired height

NOTE: for easier finding of the pin hole this hole should be seen for a moment above the clamp

SI

5 unhands the head of the locking pin so it's able to catch into the hole of the extension

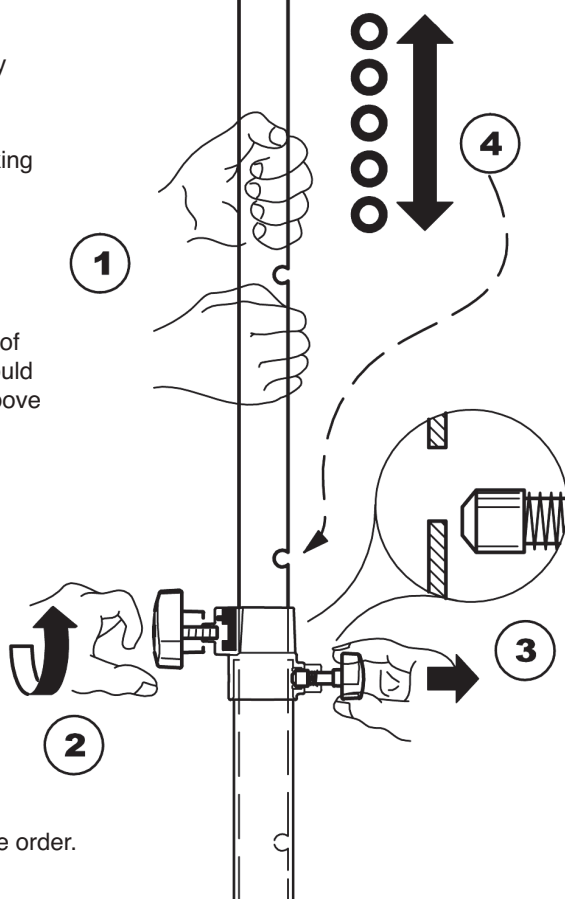
FI

6 lowers the extension slowly until the locking pin is latching into the hole

SI

7 tightens the locking knob

Remove the load in reverse order.



MAINTENANCE

- Handle the stand with care.
- Maintain only in unloaded mode.
- For cleaning use a damp cloth and a non-abrasive cleaner.

(D) DEBUGGING & (R) REPAIR

D: stand totters:

R: Arrange an even ground.

R: Spread legs into max. width and tighten the locking knob

D: Extension totters and/or is running in:

R: Make sure that the locking pin is in work and tighten locking knobs.

