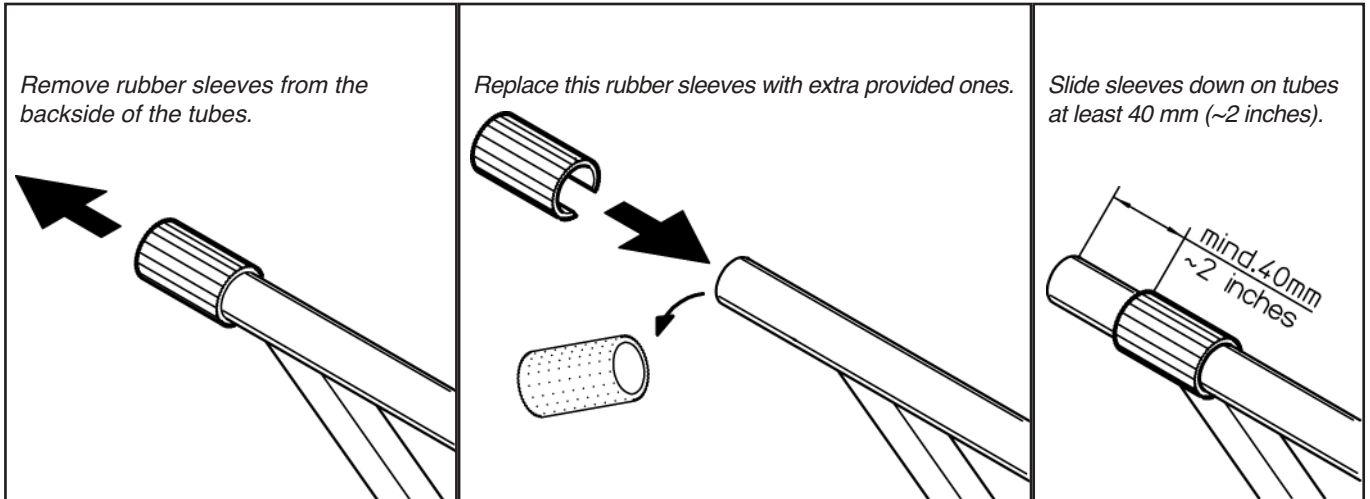


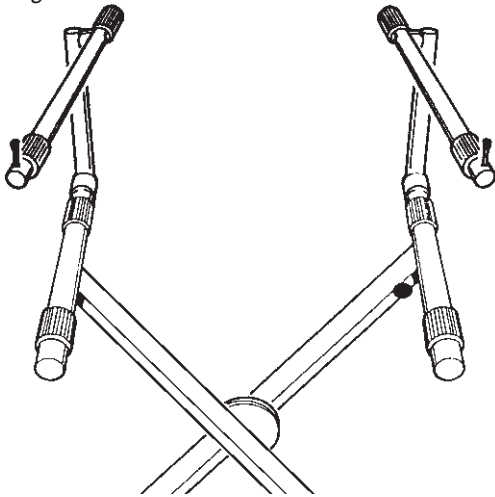
# Stacker 18941

height, depth and tilt adjustable for Keyboard Stand 18940 and 18990

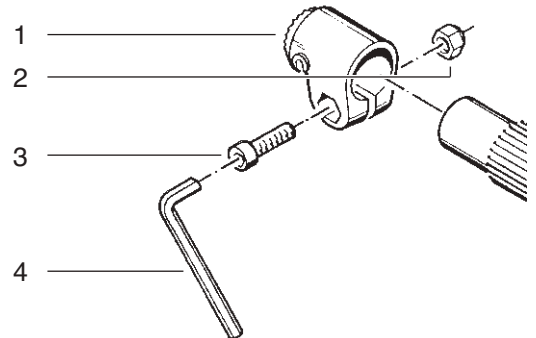
## Assembly Instructions



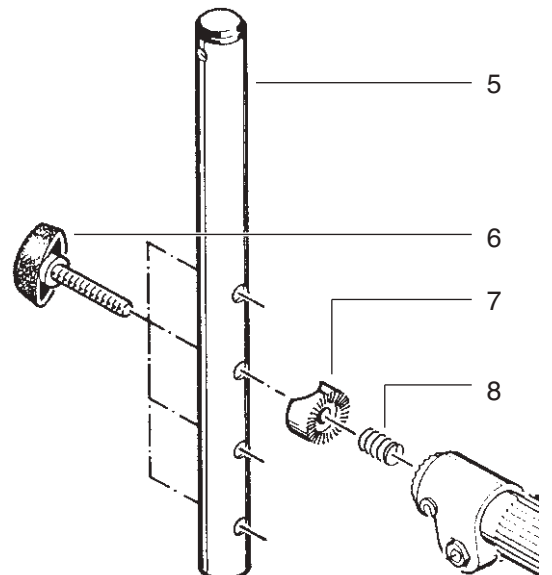
Mount both stacker parts in mirror image- see drawing.

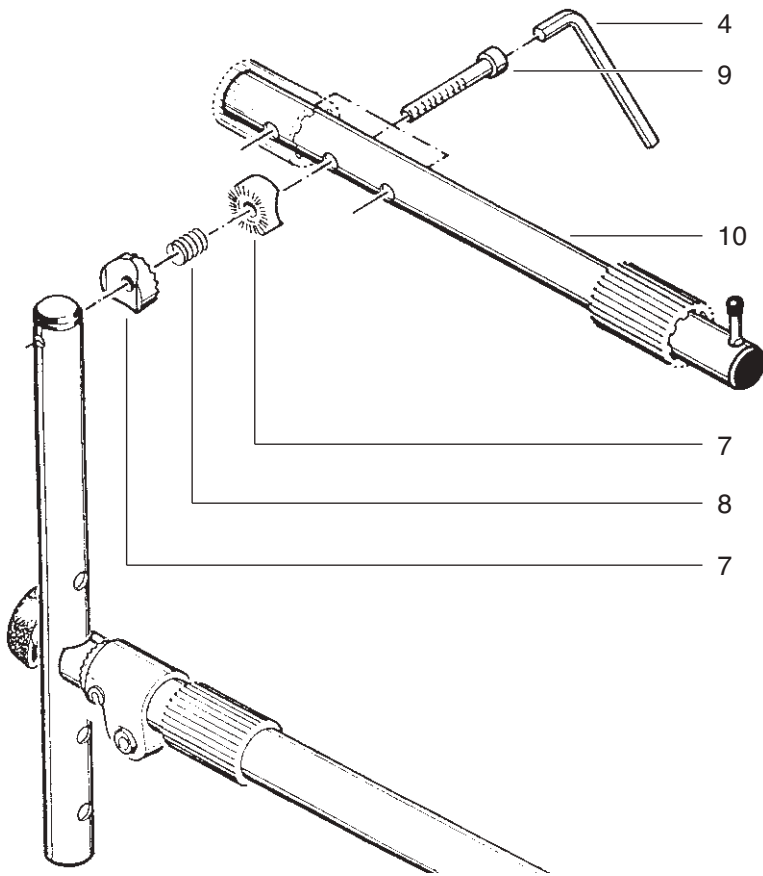


Place geared clamp 1 onto keyboard stand end tube. Using allen head screw 3 and locking nut 2, tighten clamp securely- see drawing.

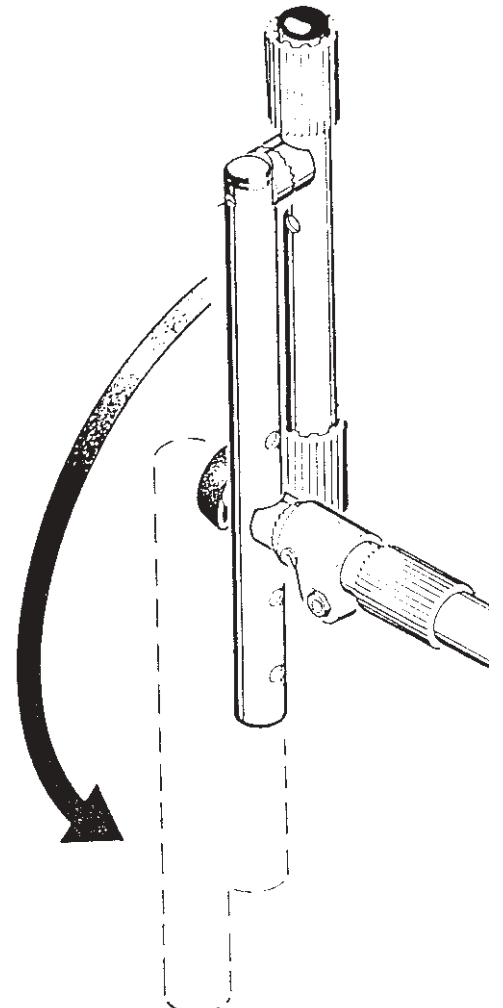


As illustrated connect vertical support arm 5 at desired height and tilt angle, to the locking device of the horizontal brace using locking knob 6, geared fastener 7 and spring 8; then tighten- see drawing.





To assemble horizontal brace 10 and vertical support arm 5, align parts in sequence as illustrated and tighten- see drawing.



**Folding your keyboard stand with stacker:**

Before closing the keyboard stand, loosen locking knob 6 so stacker swings out and down. Bring keyboard stand to closed position and re-tighten locking knobs.

To set up stacker from closed position, open keyboard to desired height. Loosen locking knob 6 so geared teeth are retracted from geared clamp. Position stacker in up right position and re-tighten locking knob.