

TABLE-MOUNT INSTALLATION

The table-mount may only be used with the last device of a daisy chain.

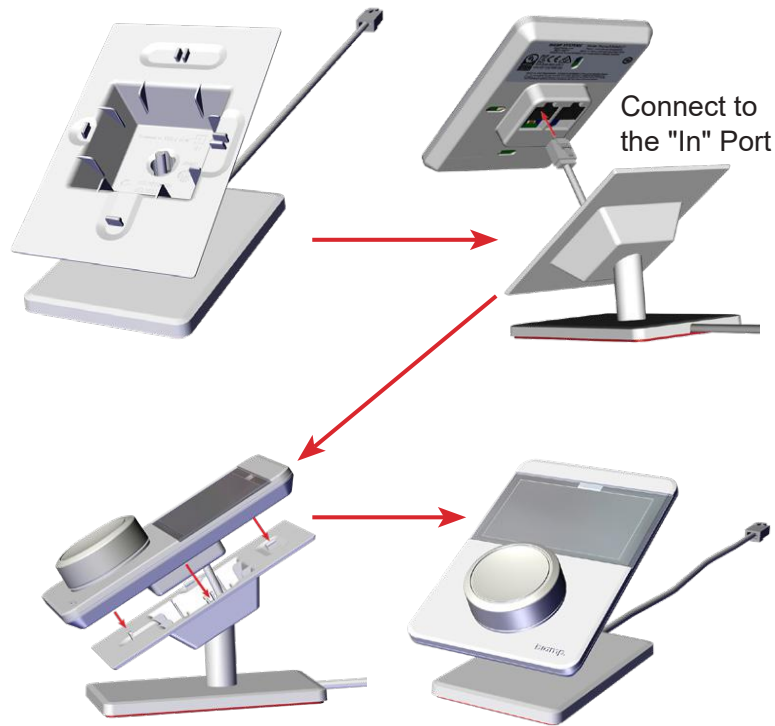


Figure 7. Table Mount Installation

WIRING

The TEC-X 1000 must be connected to a Tesira Server-Class device (such as a TesiraFORTE). Up to 4 TEC-X 1000 devices may be connected in daisy-chain. TEC-X 2000s may be included in such a daisy-chain, as long as there are only a total of 4 TEC-X devices connected.

